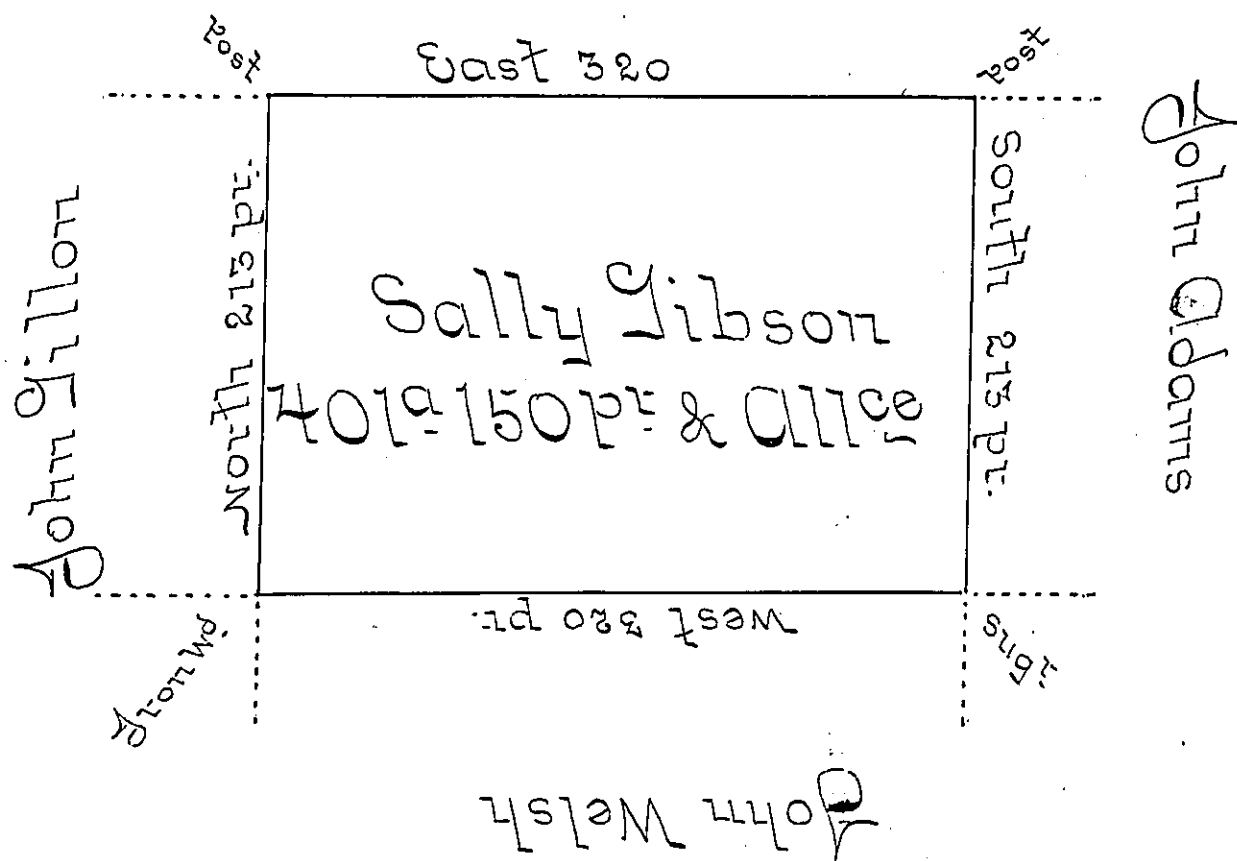


Near the district line No 1.



Situate on the west side of French Creek in Allegheny County containing 401 Acres and 150 pr. and allowance of six per cent for Roads &c Surveyed the 9th day of October 1894 in pursuance of a warrant bearing date the 30th day of May 1892 ~

Wm Power Dyer

To Daniel Brodhead Esq
Surveyor General ~

IN TESTIMONY that the above is a copy of the original remaining on file in the Department of Internal Affairs of Pennsylvania, made conformably to an Act of Assembly approved the 16th day of February, 1833, I have hereunto set my Hand and caused the Seal of said Department to be affixed at Harrisburg, this third day of October 1899.

James W. Latta
Secretary of Internal Affairs.